



User's Guide

Table Of Contents

| | |
|--|-----------|
| TABLE OF CONTENTS | 2 |
| INTRODUCTION TO DOCKEXTENDER™ | 3 |
| GETTING STARTED WITH DOCKEXTENDER | 4 |
| Installing DockExtender | 4 |
| Upgrading from a Previous Version of DockExtender | 4 |
| Uninstalling DockExtender | 4 |
| USER REFERENCE | 5 |
| Configuring DockExtender menus | 5 |
| File/Directory Tab | 8 |
| AppleShare Drive Tab | 9 |
| AppleScript Tab | 11 |
| Special Submenu Tab | 12 |
| DockExtender Command Tab | 13 |
| Configuring Multiple Docks | 14 |
| DockExtender Registration | 16 |
| KNOWN ISSUES AND TROUBLESHOOTING | 18 |

Introduction to DockExtender™

Welcome To DockExtender!

DockExtender allows you to organize and access your applications, documents and web sites through custom menus that you create. You can create up to 10 separate menus that you can access through the Dock, menu bar or by pressing a HotKey. Items in your menus can be organized into as many submenus as you want, and sectioned by separator items. Load whole folders into submenus, or have them loaded when you access the menu, giving you the most up-to-date contents at your fingertips. Launch applications, open documents, run AppleScripts, mount remote AppleShare volumes, go to websites, start composing an email and much more from menus that you have total control over. Also, with DockExtender's MultiDock feature, you can toggle between different Dock configurations, giving you access to those applications and folders that you need, without the need to cram them all into one Dock.

DockExtender is a powerful, flexible tool that allows you to work the way you want to with all of your applications, files and data. Organize yourself with DockExtender and work more efficiently than you ever have before!

DockExtender allows you to do the following:

- Centralize access to your applications, documents and other files in custom menus you design
- Switch your Dock configuration to suit your current task

DockExtender includes the following features:

- The ability to create up to 10 fully customizable DockExtender menus with any number of submenus, separators and/or items
- HotKeys that can be assigned to each DockExtender menu
- A fully customizable menu bar tool menu with access to other DockExtender menus
- Unlimited alternate Dock configurations you can switch between any time
- The ability to "pin" the Dock to an edge of your screen

The following actions may be taken from DockExtender menus:

- Launch applications
- Open documents or other files
- Open URLs in your default browser
- Mount remote AppleShare volumes
- Run AppleScripts
- Access system "Recent Applications" and "Recent Documents" lists
- Switch between your multiple Dock configurations

Getting Started With DockExtender

Installing DockExtender

DockExtender requires that you be running Mac OS X 10.1.3 or later (including 10.3.x). Install DockExtender by opening the DockExtender.mpkg file that is located on the disk image. The Apple "Installer" application will be activated and will guide you through the rest of the installation process. The installation will require an administrative password in order to complete successfully.

Upgrading from a Previous Version of DockExtender

In order to upgrade from a previous version of the DockExtender software, first follow the above steps for a first-time installation of DockExtender. It is then necessary to log out and log back in to OS X to complete the upgrade process.

Uninstalling DockExtender

To uninstall DockExtender run the Uninstall application that can be found in the user's Library -> Logs folder. This program will exit DockExtender and delete all of its program files.

User Reference

The DockExtender Preference Pane can be used to configure and install your DockExtender menus, to configure your MultiDock settings, and to register your copy of DockExtender. The rest of this section discusses the use of the DockExtender Preference Pane in detail.

Configuring DockExtender menus

DockExtender allows you to create up to ten distinct dock menus. Additionally, you can also use DockExtender to configure a menu that appears as an item in the menu bar on the Desktop. These menus can be set up through the Menu Configuration tab of the DockExtender Preference Pane (Fig. 1).

In order to configure a menu, select it from the drop-down list at the top of the tab. A user can configure the menu bar item by selecting the last item in the list (“Menu Bar Tool”). The first time a dock menu is configured, it will be listed as an “Unused Menu”. Click the “Set menu name...” button to change the name of the menu. A sheet will appear with the current name; change the name and hit “OK” to accept, “Cancel” to keep the current name.

A dock menu will initially be assigned a default icon (see Fig. 1). You can change the dock menu’s icon through one of the following methods: dragging a file with the desired icon into the “Dock Menu Icon” image well; clicking the “Find Icon” button and selecting a file with the desired icon; dragging an item in the “Menu Items” list into the image well; highlighting an item in the “Menu Items” list and selecting “Use Icon for Menu” from the contextual menu. (Right-click or control-click on the item to access the contextual menu.)

Clicking on the “Add Menu To Dock” button in the Menu Configuration tab will insert the menu at the beginning of the Dock. Once the menu has been added to the Dock, you can reposition it in the same way that you would for any other Dock Item. Clicking on the Dock menu will display the contents of the menu, allowing you to use your newly created Dock menu.

If you alter the configuration of the DockExtender menu bar item or of a menu that is currently installed into the Dock, pressing the “Apply Changes” button will cause your changes to take effect.

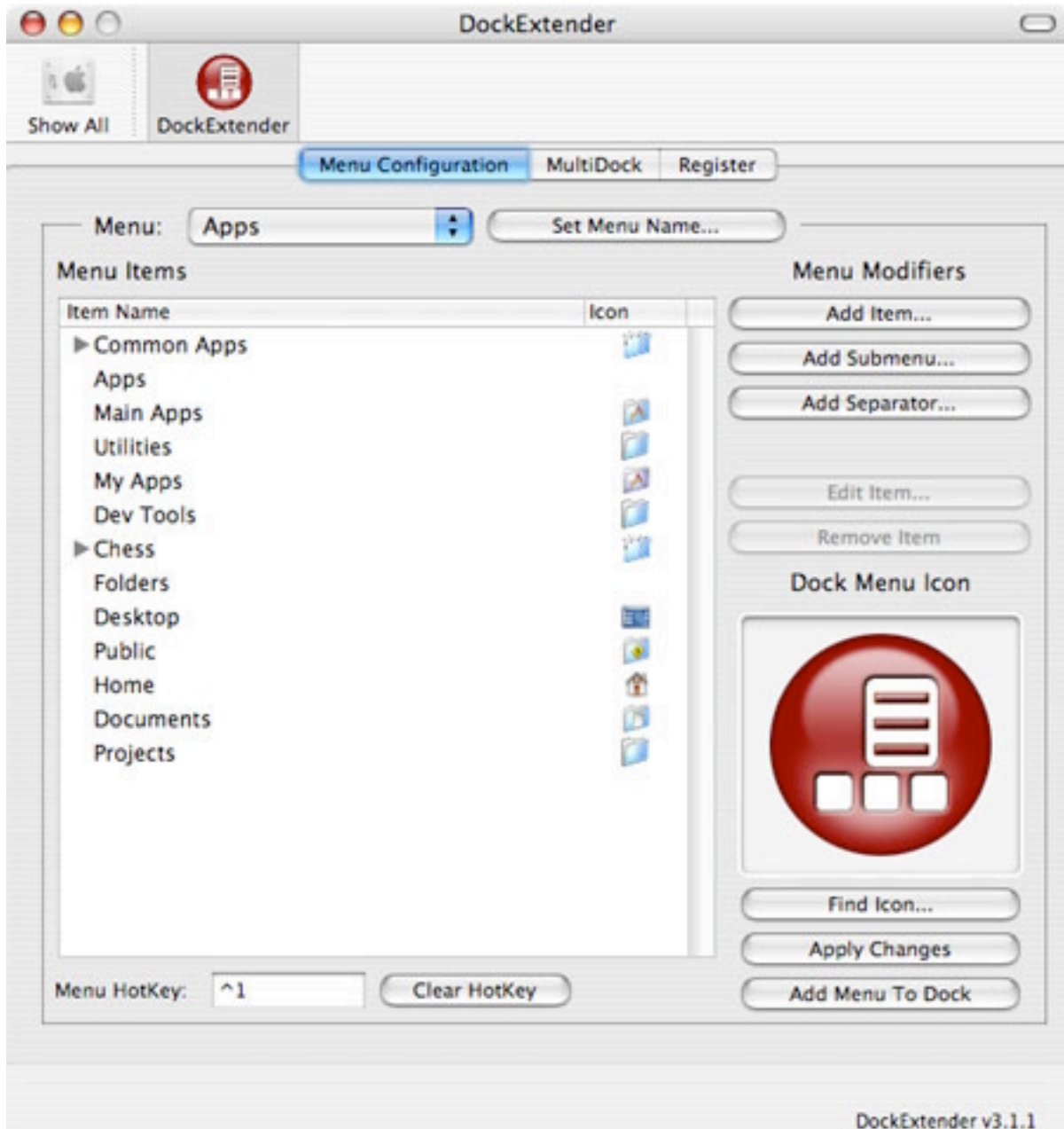


Figure 1: The Menu Configuration Tab

Each DockExtender menu consists of a list of items that perform certain actions. These items are listed in the “Menu Items” table within the Menu Configuration tab. You may add items to the list by:

- Dragging items from the Finder or other application (e.g. URLs may be dragged from a web browser)
- Using the buttons to the right of the table that are marked as “Menu Modifiers”
- Selecting an item from the contextual menu for an item in the table (Right-click or control-click on an item to access the contextual menu.)

Separators and empty submenus may be added by clicking the “Add Submenu...” or “Add Separator...” buttons, or by selecting “Add Submenu...” or “Add Separator...” from the list’s contextual menu. “Adding” an item places the new item at the end of the list. If an item in the list is selected, all “Add” buttons and contextual menu items will change to “Insert” buttons/contextual menu items. “Inserting” an item will place the new item just above the selected item in the list. Items may be rearranged in the list by dragging them from their current location to the desired location.

You may remove any item from the menu list by highlighting that item and performing one of the following actions:

- Clicking the "Remove" button
- Pressing the "Delete" key (or "Backspace" key if you're using a Windows USB keyboard)
- Dragging the item to the Trash in the Dock
- Selecting "Remove Item" from the contextual menu for the list (click & hold or control-click to access the contextual menu)

Clicking the "Add Item..." (or "Insert Item...", if an item is selected) button will bring up a dialog which allows you to set up a new item. You can edit an item by selecting it and:

- Clicking the "Edit Item..." button (if highlighted)
- Selecting "Edit Item..." from the contextual menu for the list (Right-click & hold or control-click to access the contextual menu.)

In order to assign a HotKey to the currently selected DockExtender menu, click in the field labeled “Menu HotKey”. Then press the HotKey combination that you wish to be associated with the menu. If there is already a HotKey assigned to the menu, the old HotKey will be removed as well. Pressing the “Clear HotKey” button will remove the HotKey that is currently assigned to the menu. When you press the HotKey assigned to a DockExtender menu, the menu will be brought up as a context menu at the current mouse location. Note that the DockExtender menu does not need to be placed in the Dock for the HotKey feature to work.

The following subsections deal in detail with the dialog that is brought up by the “Add/Insert Item...” button.

File/Directory Tab

The File/Directory tab (Fig. 2) allows you to add a file or directory to the menu. You can choose the file or directory to add from the browser at the top of the sheet. If a directory is selected, you can also choose how it will be represented in the menu:

- "Folder's Contents" puts all of the contents of the folder into the menu as individual items.
- "Folder Alias" places the folder in the menu. Selecting this item will open the associated folder in the Finder.
- "Static Submenu" creates a new submenu containing the current contents of the folder. Sub-folders will be made into submenus as well.
- "Dynamic Submenu" adds a submenu that re-loads its contents whenever the folder changes. (Please note that accessing any Dynamic menu for the first time will take more time than subsequent accesses.)

Because deeper dynamic submenus may take more time to load, you can select how many levels of sub-folders will be made submenus. Select how many levels you would like for this submenu with the "Submenu Depth" slider.

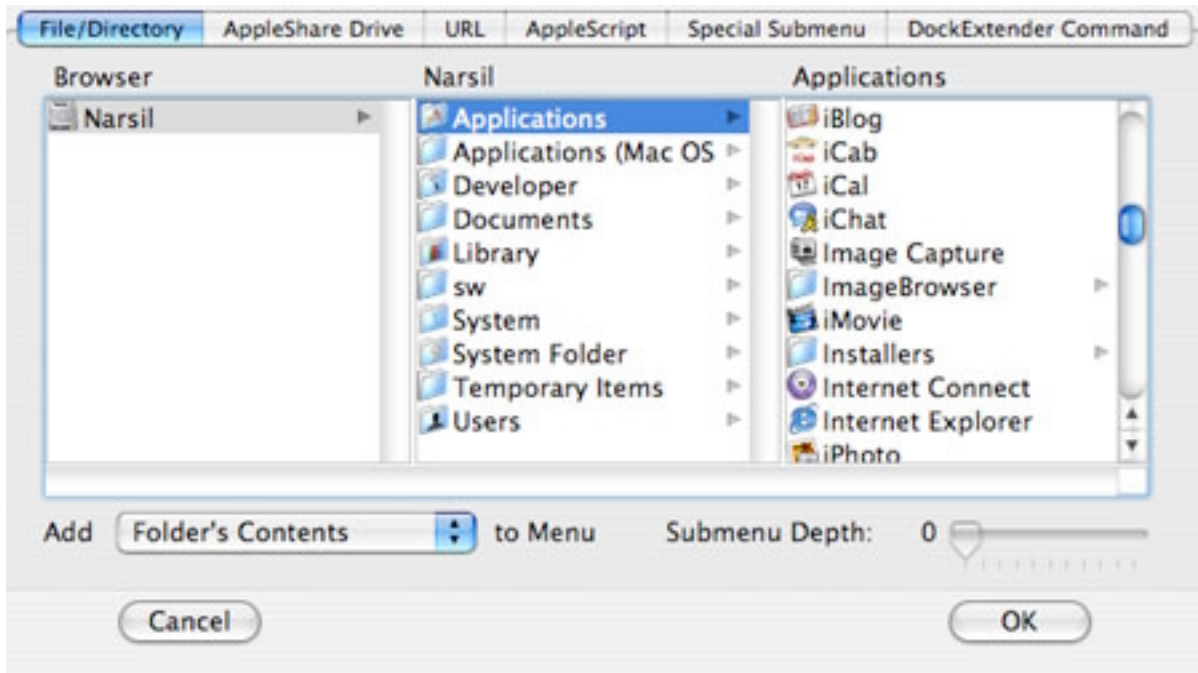
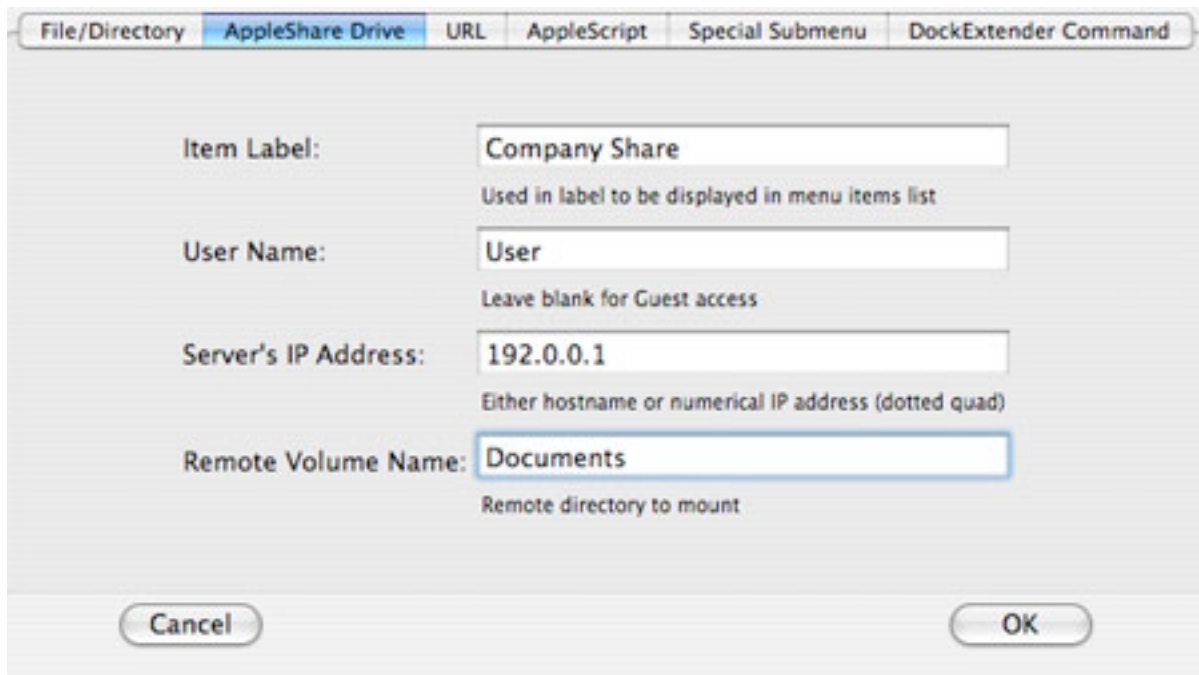


Figure 2: The File/Directory tab of the Add Item dialog

AppleShare Drive Tab

The AppleShare Drive tab (Fig. 3) allows you to add a remote AppleShare volume to the DockExtender menu. Enter a descriptive label for the volume into the "Item Label" field. This label will be displayed in the DockExtender menu in quotes with "AppleShare Drive" afterwards. For example, if "AppServer" is entered in the label field, the volume will be displayed as: "AppServer' AppleShare Drive" in the DockExtender menu. Enter your username in the "User Name" field, or leave it blank if you want to connect as a Guest user. Enter the IP Address (or hostname) of the remote server in the "Server's IP Address" field. Generally this will be in the "dotted-quad" format (e.g. 128.0.0.1). Finally, enter the name of the remote volume that you wish to access (e.g. "billsmith").

NOTE: The IP Address of the server is a required field. An error message will be displayed if you attempt to add an AppleShare server without an IP Address.



The image shows a dialog box with a tabbed interface. The 'AppleShare Drive' tab is selected. It contains four text input fields with labels and instructions below them:

- Item Label:** The input field contains 'Company Share'. Below it, the text reads 'Used in label to be displayed in menu items list'.
- User Name:** The input field contains 'User'. Below it, the text reads 'Leave blank for Guest access'.
- Server's IP Address:** The input field contains '192.0.0.1'. Below it, the text reads 'Either hostname or numerical IP address (dotted quad)'.
- Remote Volume Name:** The input field contains 'Documents'. Below it, the text reads 'Remote directory to mount'.

At the bottom of the dialog, there are two buttons: 'Cancel' on the left and 'OK' on the right.

Figure 3: The AppleShare Drive tab of the Add Item dialog

URL Tab

The URL tab (Fig. 4) allows you to add a URL to the menu. Common URLs will often refer to:

- Web pages (e.g. <http://www.codetek.com>)
- Email addresses (e.g. <mailto:support@codetek.com>)
- File references (e.g. <file:///Developer/Documentation/Cocoa/CocoaTopics.html>)
- FTP sites (e.g. <ftp://ftp.clockwork.org>)
- RealOne audio (e.g. <pnm://rms01.cites.uiuc.edu/encoder/livewill.rm>)

Enter a descriptive title in the "URL Title" field. This will be the title of the menu item that is created. Enter the URL in the "URL" field. You may cut and paste URLs from other sources into this field.

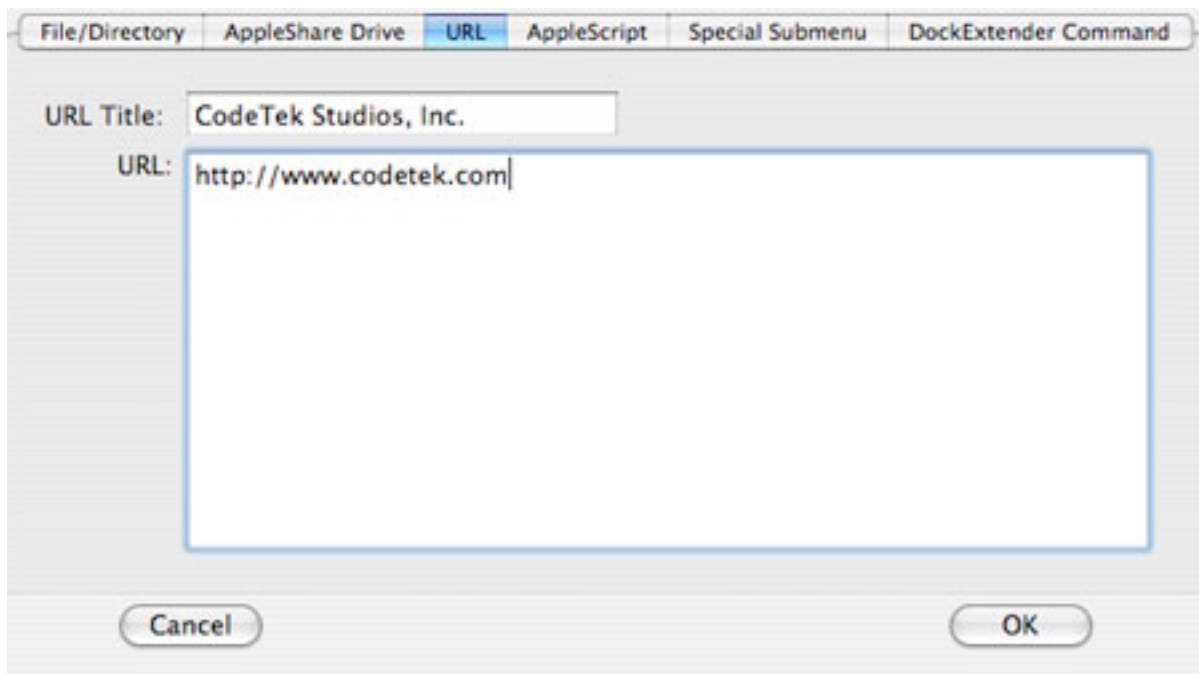


Figure 4: The URL tab of the Add Item dialog

AppleScript Tab

The AppleScript tab (Fig. 5) allows you to enter AppleScript commands to run from a DockExtender menu. Enter a descriptive title in the "Script title" field. This will be the title of the menu item that is created. Enter the AppleScript you wish to run in the "Script Text" editor window. You may cut and paste a script into this editor from another application (e.g. AppleScript Studio).

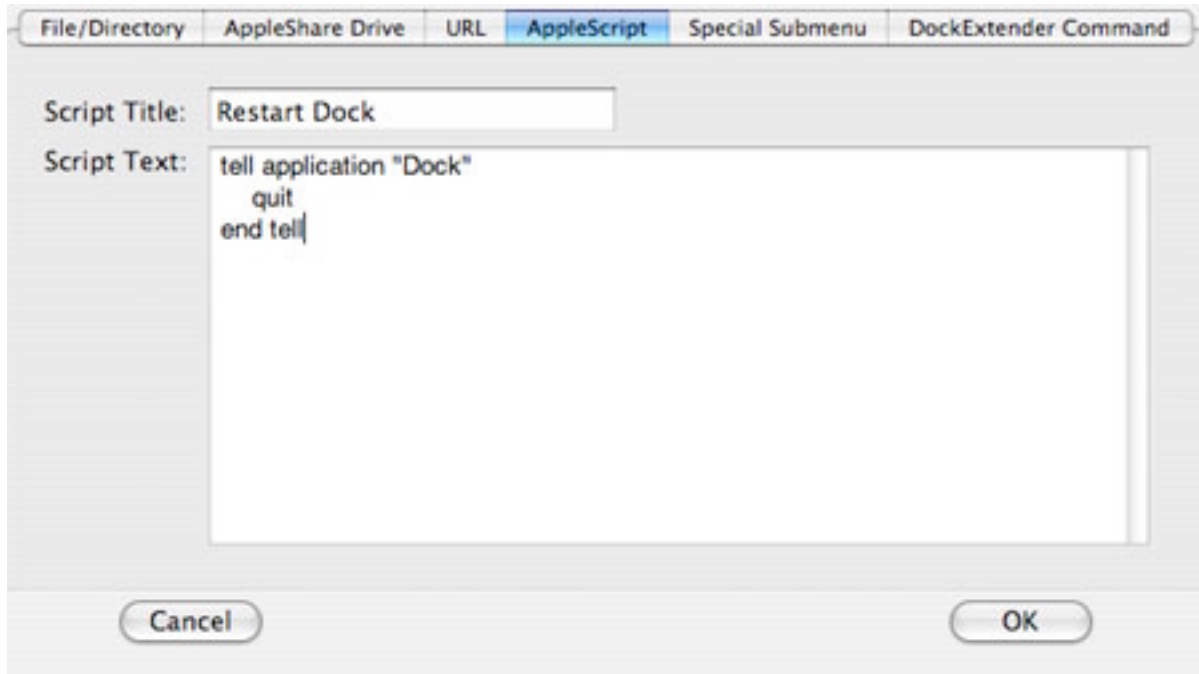


Figure 5: The AppleScript tab of the Add Item dialog

Special Submenu Tab

The Special Submenu tab (Fig. 6) allows you to add the following submenus to a DockExtender menu:

- Recent Applications – Shows the most recently launched applications
- Recent Documents – Shows the most recently opened documents
- System Preferences – Lists all preference panes on your system so you can access them individually
- MultiDock Configurations – Lists your MultiDock configurations so you can change between them easily

Select the Submenu you wish to add from the "Submenu" button. The title that will be shown for the menu item is displayed in the "Submenu Title" field.

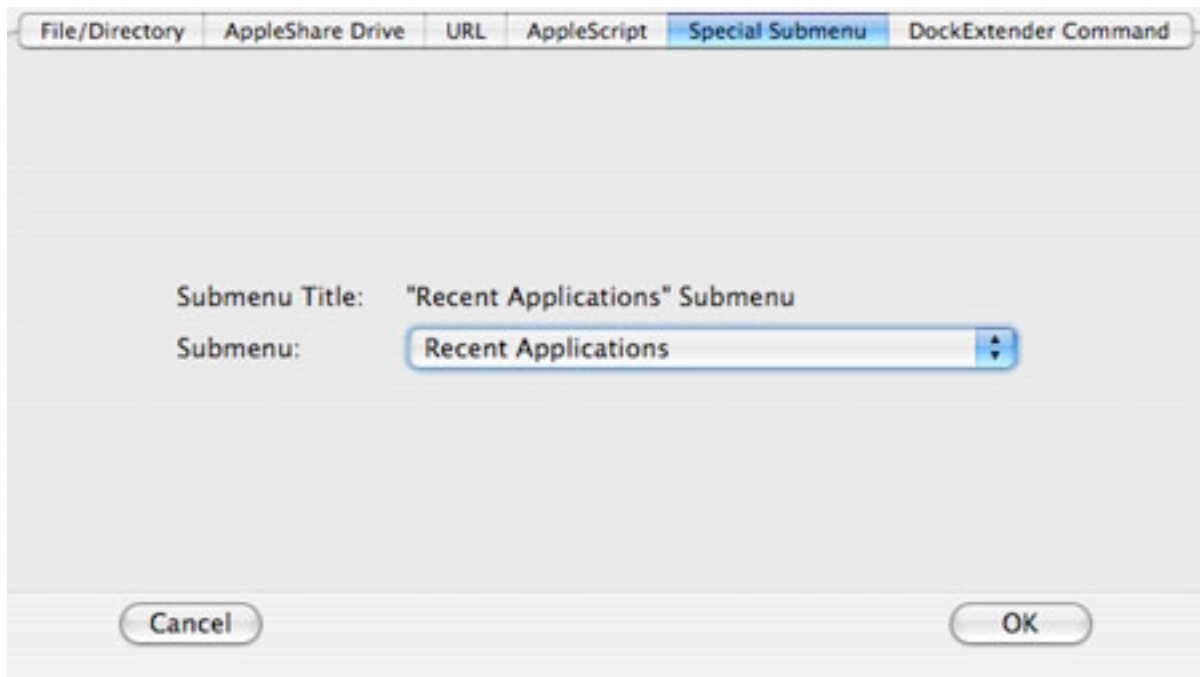


Figure 6: The Special Submenu tab of the Add Item dialog

DockExtender Command Tab

The DockExtender Command tab (Fig. 7) allows you to add special DockExtender commands to a menu. The following commands may be added from this tab:

- "Hide DockExtender" will make the DockExtender menu bar item invisible.
- "Show DockExtender" will make the DockExtender menu bar item visible.
- "Restart Dock" refreshes the Dock, reloading all Docklings
- "Open DockExtender Preferences" will open the DockExtender Preference Pane

Select the command you wish to add from the "Command" button. The title that will be shown for the menu item is displayed in the "Command Title" field.

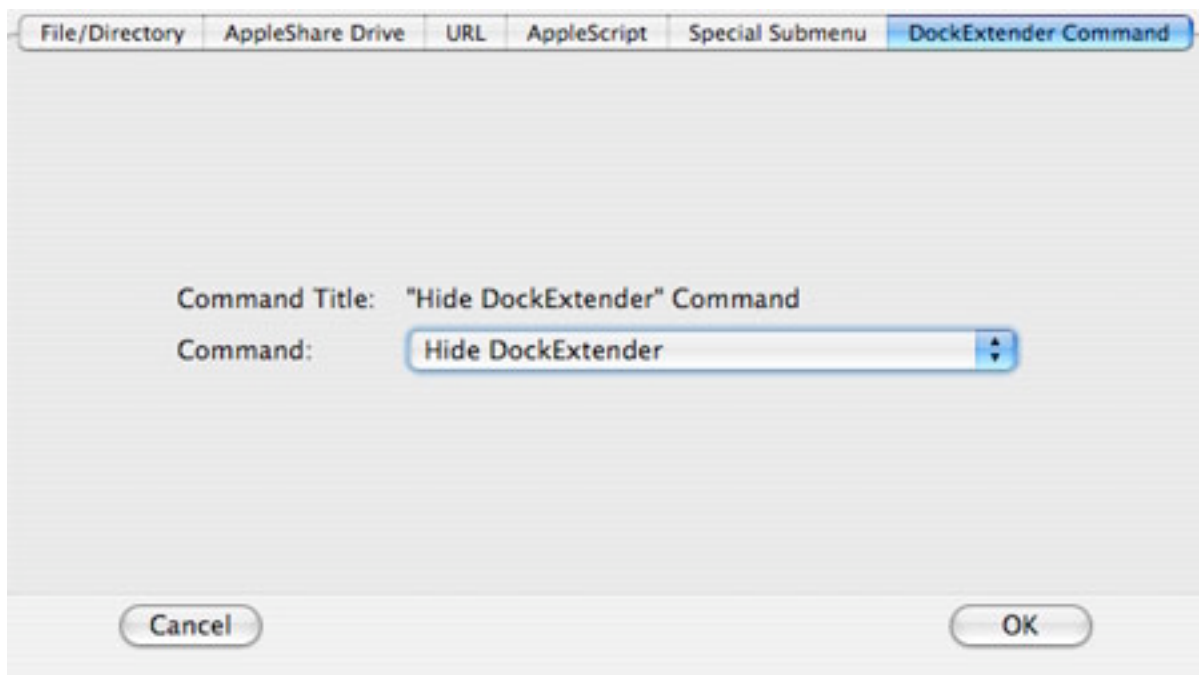


Figure 7: The DockExtender Command tab of the Add Item dialog

Configuring Multiple Docks

The MultiDock feature of DockExtender allows you to have any number of distinct docks. For example, with MultiDock, you would be able to use one dock that contains all of your media-editing applications, and then quickly switch over to another dock that contains your games.

To use MultiDock, open up the DockExtender Preferences and click on the MultiDock tab (Fig. 8). From there, you will be able to use the “Select Dock” drop-down list to choose one of the docks that you have already created. When you select a dock, its current contents will be displayed in the “Dock Contents” list. To make this dock your currently active dock, click on the “Set As Active Dock” button.

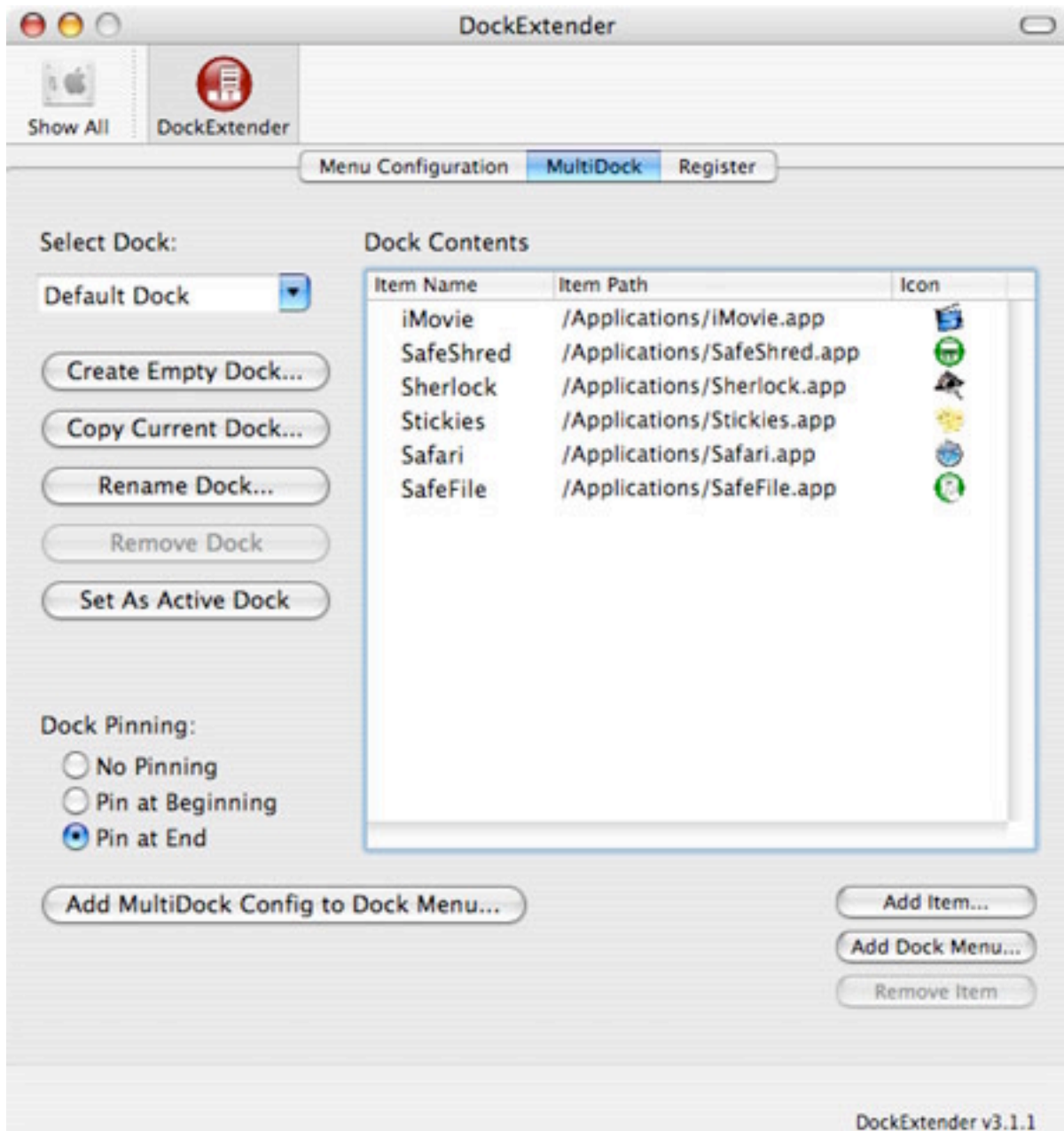
You are also able to edit and rearrange the contents of a dock - even if that dock is not the currently active dock. Items can be added to the dock by either dragging them into the “Dock Contents” list, or by clicking on the “Add Item...” button and then selecting the item from the dialog box. Through the “Add Dock Menu...” button, it is possible to add menus from the “Menu Configuration” to a selected dock. You can remove items by selecting them and pressing either the “Remove Item” button or the delete key on your Apple keyboard (backspace key on Windows USB keyboards), or by dragging the item to the trash. You can rearrange the items in the “Dock Contents” box simply by dragging them to the desired position.

You can also customize the individual docks themselves by renaming them with the “Rename Dock...” button. The “Create Empty Dock...” button will create a new custom dock with a name that you specify. This dock will initially have no items. On the other hand, the “Copy Current Dock...” button creates a new dock whose initial contents are the same as those of your currently active dock. The currently selected dock can also be deleted with the “Remove Dock” button.

Another feature found on the MultiDock tab is the ability to set the pinning for your various docks through the “Dock Pinning” radio buttons. With no pinning, a dock will appear in the middle of its edge of the screen (this is the default). When a dock is pinned at the beginning, it will appear at the top or left side of its edge of the screen. And if a dock is pinned at the end, it will appear at the bottom or right side.

Note that any changes made to the currently active dock will not be reflected immediately, but only after the dock is restarted.

The “Add MultiDock Config to Dock Menu...” button allows you to add your list of custom docks to a DockExtender menu. Pressing the button will bring up a dialog box from which you can select the DockExtender menu to which to add your MultiDock configuration.



DockExtender Registration

The Register tab (Fig. 9) contains the DockExtender license. You must read through this license and select the "I Agree" radio button in order to use DockExtender in either registered or unregistered form. An unregistered copy of DockExtender will allow you to have access to all features, but in a limited fashion. This will allow you to try DockExtender and test all of its features.



Figure 9: The Register tab

In its unregistered state, DockExtender will only allow you to configure one DockExtender menu and the Menu Bar Tool menu. A maximum of eight items will appear in the DockExtender menu, though you can have as many levels of submenus that you wish to have. All menu items are enabled, and you may assign a hotkey to your menu for easy access.

When you are ready to unlock the full functionality of DockExtender, you can register your copy. By clicking on the "Get Registration Code" button you will be taken to the CodeTek Studios Web Site where you may purchase a registration code. The registration code will be displayed as part of the checkout procedure; print this page to a PDF or to a printer to save your transaction information. Any registration information you provide to CodeTek Studios will NEVER be given out to anyone outside of CodeTek. After you receive your registration code, type, drag, or paste it into the "Registration Code" field and press the "Submit Code" button. If you drag or paste it into the field, please make sure that no spaces are before, after, or in the registration code; those spaces will be considered part of the registration code, and may make the code invalid.

To send feedback to CodeTek, please press the "Send Feedback to CodeTek" button, or send us an email at support@codetek.com. We appreciate receiving your suggestions and comments!

By clicking the "Check For New Version" button while you are connected to the Internet, the CodeTek Studios website will be queried for any updates to DockExtender. When you purchase a registration code for a product from CodeTek Studios, all updates to that product are free!

Enjoy!

Copyright © 2002-2003 CodeTek Studios, Inc. All Rights Reserved.

DockExtender is a registered trademark of CodeTek Studios, Inc.

Other company and product names mentioned herein are trademarks of their respective companies. Mention of third-party products is for informational purposes only and does not constitute an endorsement or a recommendation of those products. CodeTek Studios, Inc. assumes no responsibility for the performance or use of any such third-party products.

Known Issues and Troubleshooting

Why is my DockExtender Dockling menu drawn in the wrong place or require me to scroll the first time I open it?

Due to a bug in the way that Mac OS X draws contextual menus that may overlap with the Dock or an edge of the screen, items in all contextual menus, including DockExtender menus may require you to scroll if they are positioned in certain ways. Fortunately, DockExtender is able to reposition its menus after the first time they are drawn, so that this problem only manifests the first time that each menu is opened.

Why does it take so long to open some menus the first time they are opened?

When a menu is first opened, it will load all of its items, which can take some time in the case of dynamic submenus or large static submenus. Dynamic submenus will read the contents of the folder that they use as their data source the first time they load or the first time after a file has been added to that Folder. Large static submenus will read and parse a large XML file when it is first loaded, which may take some time. We are continuing to work to improve the performance of DockExtender's menu loading and display code.

Why does my Dock “freeze” when I activate a dock menu?

This behavior is due to a problem in the way that Mac OS X draws contextual menus. It can be avoided by not holding down the mouse button when you click on a dock menu. A “frozen” dock can be fixed by moving your mouse pointer back onto the dock.

Why can't I click & hold to select a menu item from a Dockling?

Because we have had to use contextual menus instead of Dockling menus, you cannot click & drag to select items from Dockling menus. There were many performance and appearance benefits to using contextual menus, and this is one of the few tradeoffs made by this decision.

Where can I go to get more up-to-date troubleshooting information if my problem is not discussed here?

You can get more troubleshooting information from our Knowledge Base articles at:

<http://codetek.trakhelp.com>

If your problem is not found on that site either, then please send an email to support@codetek.com, and we'll respond as soon as possible.

Index

adding & inserting menu items, 7
AppleScript tab, 11
AppleShare Drive tab, 9
dock menus, 5
DockExtender Command tab, 13
Dynamic Submenu, 8
File/Directory tab, 8
Folder Alias, 8
Folder's Contents, 8
HotKeys, 7
Install, 4
menu bar item, 5
Menu Configuration, 5
MultiDock, 14
Preference Pane, 5
Registration, 16
separators, 7
Special Submenu tab, 12
Static Submenu, 8
submenus, 7
support & feedback, 17
Uninstall, 4
Upgrade, 4, 17
URL tab, 10